

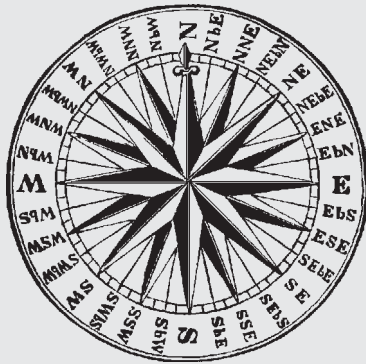
Cornell University
International Students
& Scholars Office



2004-2005
Annual Statistics Report

International Students and Scholars Office
of the Office of the Dean of Students
B-50 Caldwell Hall, Ithaca, NY 14853
<http://www.isso.cornell.edu>

International Students & Scholars Office



Cornell University

B50 Caldwell Hall
Ithaca, N. Y. 14853-2602
phone: 607-255-5243
<http://www.isso.cornell.edu>

ISSO Staff

Brendan O'Brien
Director

Laura B. Taylor
Associate Director

Sarah Hilsman
*Assistant Director
for Immigration Services*

Mary H. Schlarb
*Assistant Director
for Programming Services*

Steve Shumway
Administrative Manager

Adriana P. Rovers
*Immigration Advisor
and Program Coordinator*

Mariah J. Sawyer
*Immigration Advisor
and Program Coordinator*

Bill Webster
Immigration Data Specialist

Cindy Lou Austic
Administrative Assistant

Paula Senno
*Administrative Assistant
and Receptionist*

Mary J. Wheaton
Administrative Assistant

Table of Contents

International Student Enrollment at Cornell

International Students at Cornell 1995-2004	9
International Students as % of Total Cornell Enrollment 1995-2004	9
Enrollment by College and Division Fall 2004	10
International Undergraduate, Graduate and Professional Enrollment 1995-2004	11
International Freshman and Transfers 1995-2004	12
Student Visa Categories for Fall 2004	12

Geographic Distribution

Africa	17
Asia	18
Europe	19
Latin America & Caribbean	20
Middle East	21
North America	22
Oceania	22
Largest Geographic Representation Fall 2004	23

International Scholars at Cornell

International Academic Staff 1993-2003	27
Largest Geographic Representation 2003-2004	27
Major Fields of Specialization Fall 2003	28
International Academic Staff by Geographic Region Fall 2003	29

Statistics for Ivy League and Other Institutions

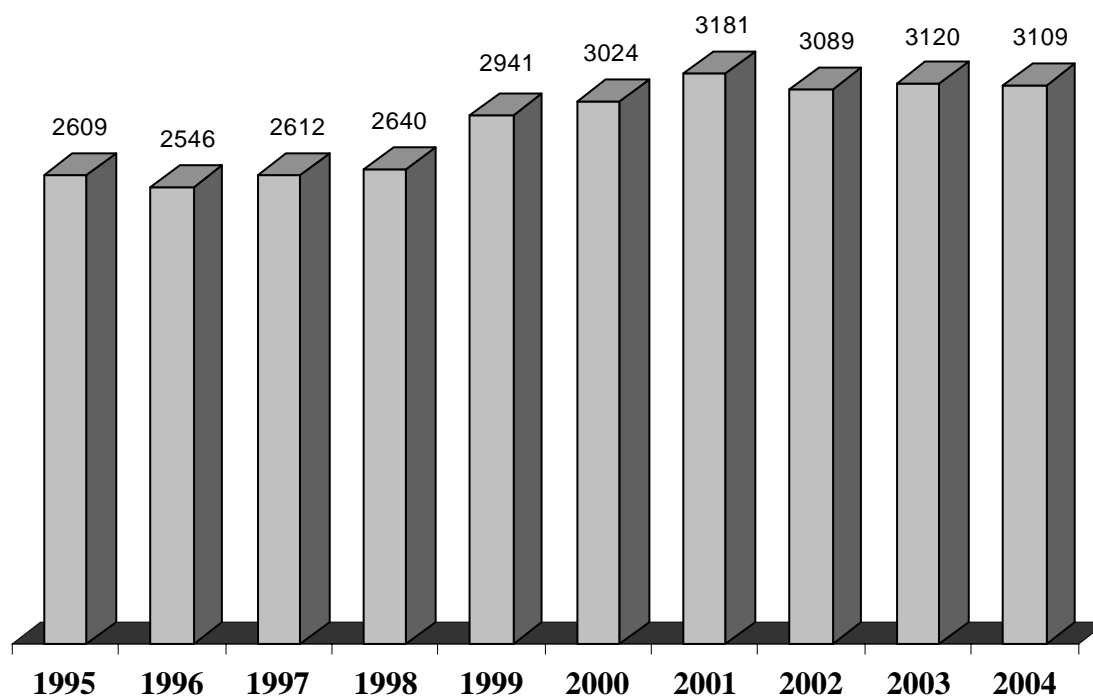
Participating Institutions	31
International Student Enrollment Fall 2004 (table)	33
International Student Enrollment Fall 2004-Fall 2003 (graph)	34
International Students as a % of Total Student Enrollment Fall 2004-Fall 2003	35
International Undergraduate Enrollment Fall 2004-Fall 2003	36
International Undergrads as a % of Total Undergrad Enrollment Fall 2004-Fall 2003	36
International Graduate & Professional Enrollment Fall 2004-Fall 2003	37
International Grads & Professionals as a % of Total Grad & Professional Enrollment Fall 2004-Fall 2003	37
International Scholars at Ivy League and Other Institutions 2003-2004 (table)	38
International Scholars at Ivy League and Other Institutions 2002-03 & 2003-04	39

Note: All reports are as of March, 2005. Unless otherwise noted, all student figures included in this report reflect registered, full-time students who attend Cornell University at the Ithaca, NY campus only. Additionally, unless otherwise noted, international scholar figures do not include scholars who are located at the Weill Cornell Medical College in New York City.

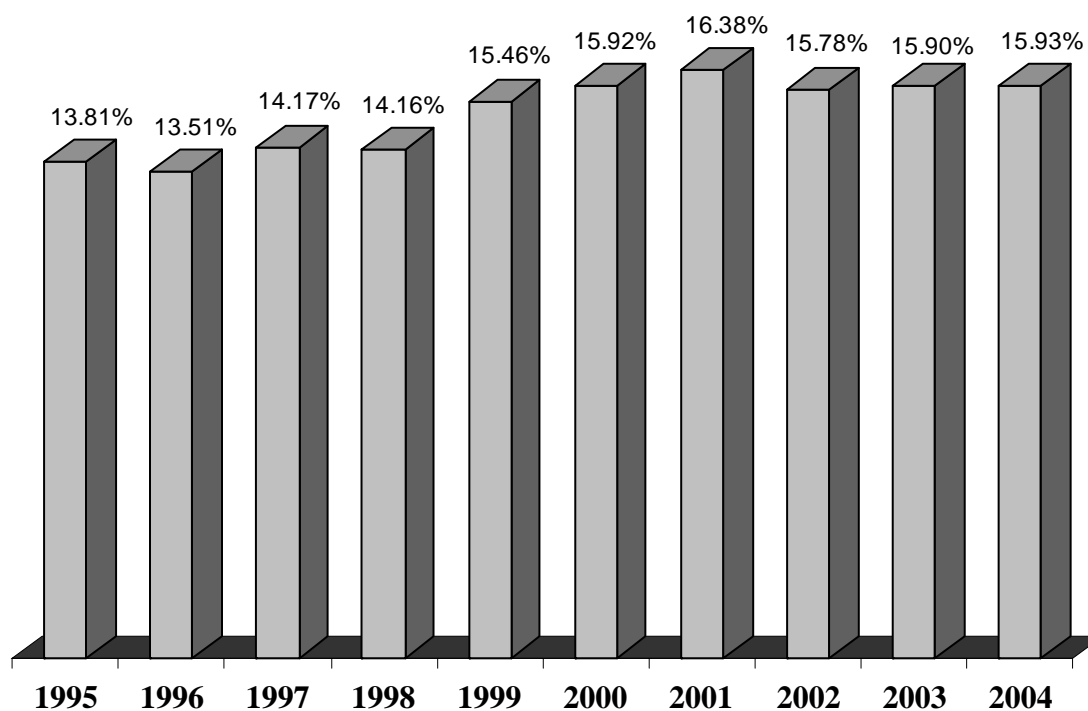


International Students

International Students at Cornell 1995-2004



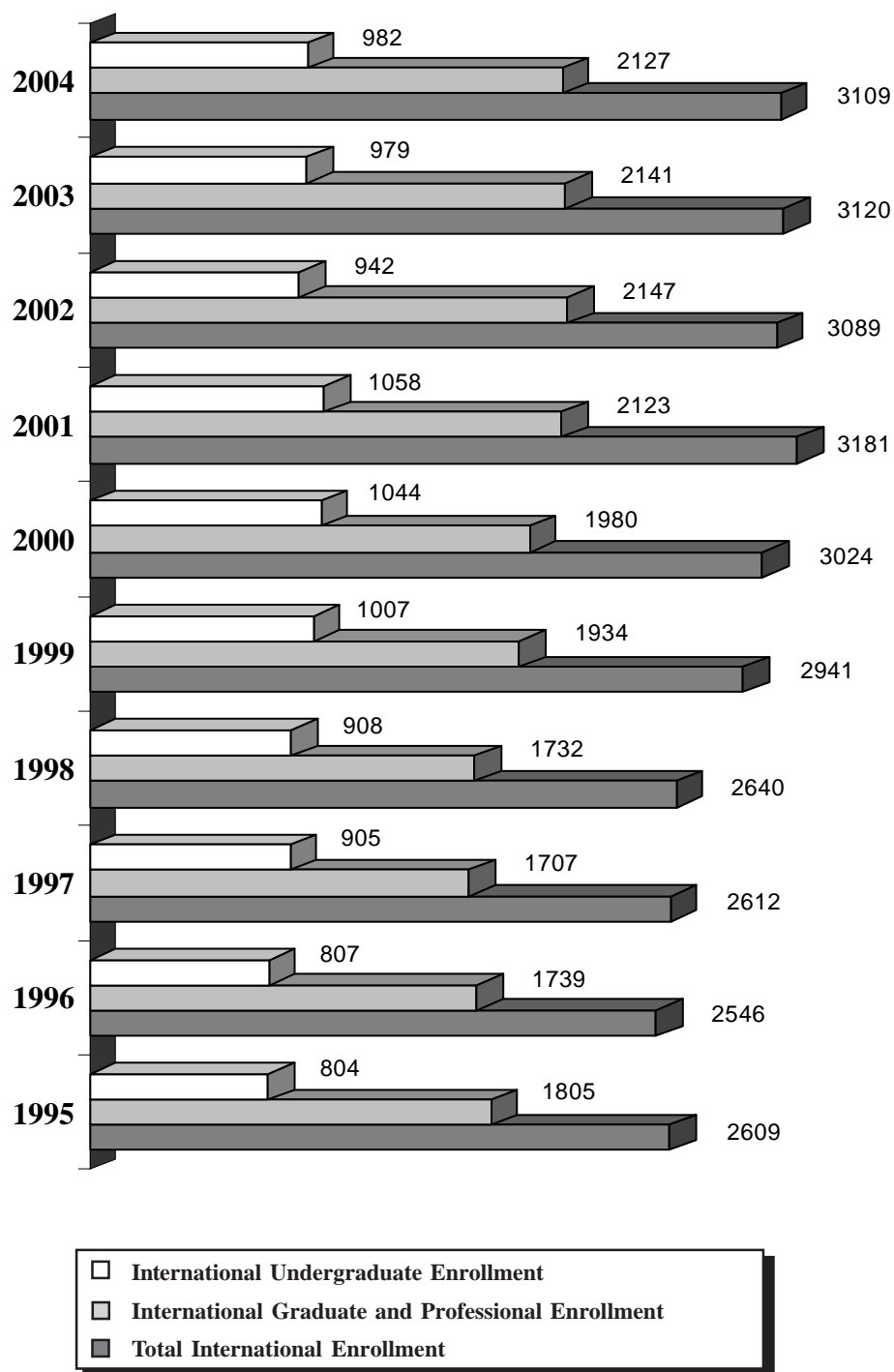
International Students as a Percentage of Total Cornell Enrollment 1995-2004



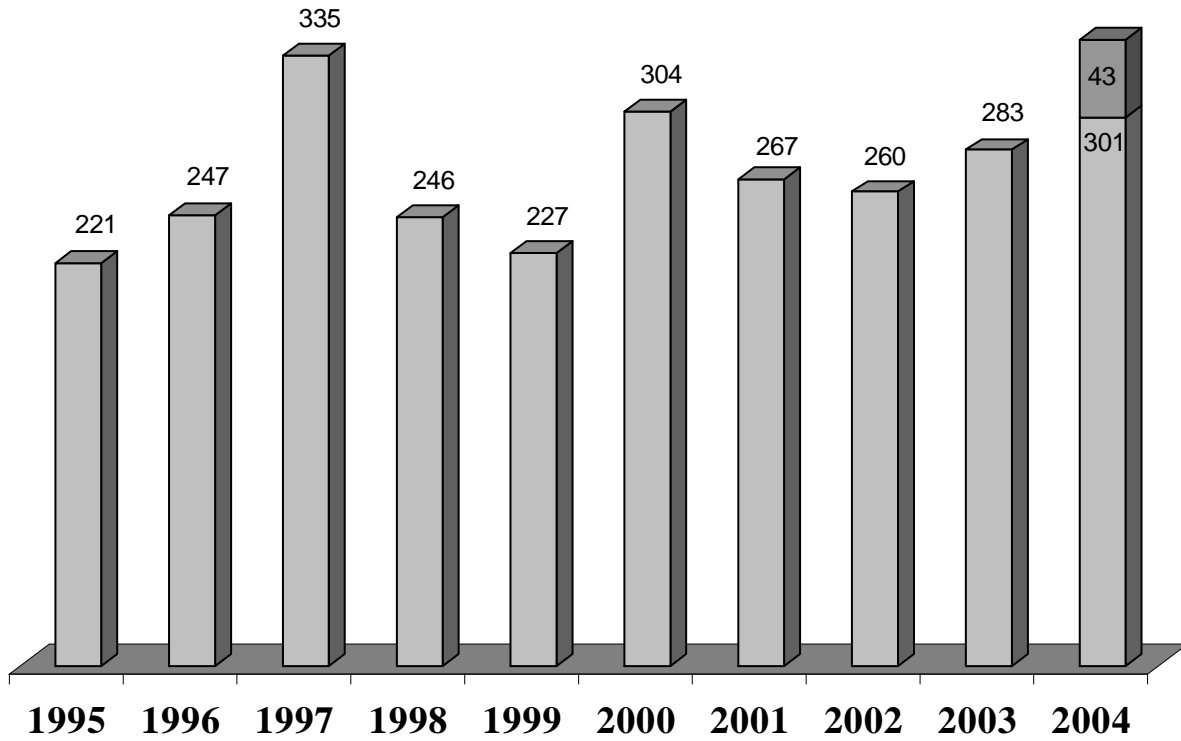
Cornell University Enrollment by College, Fall 2004

	<u>International</u>	<u>Total at Cornell</u>	<u>Int'l as % of Total</u>
<u>Undergraduate</u>			
<u>Endowed</u>			
Architecture, Art & Planning	68	547	12.4%
Arts & Sciences	309	4,355	7.1%
Engineering	338	2,701	12.5%
Hotel Administration	82	821	10.0%
Total Endowed	797	8,424	9.5%
<u>Statutory</u>			
Agriculture & Life Sciences	102	3,114	3.3%
Human Ecology	64	1,249	5.1%
Industrial & Labor Relations	15	797	1.9%
Total Statutory	181	5,160	3.5%
<u>Internal Transfer & Others</u>			
Total Internal Transfer & Others	4	41	9.8%
Total Undergraduate	982	13,625	7.2%
<u>Graduate & Professional</u>			
Total Endowed	1,493	4,103	36.4%
Total Statutory	634	1,790	35.4%
Total Grad & Professional	2,127	5,893	36.1%
Grand Totals	3,109	19,518	15.9%

International Student Enrollment Undergraduate, Graduate and Professional 1995–2004



International Freshmen & Transfer Students 1995-2004¹



¹ Transfer students were not counted prior to 2004. In 2004, there were 301 Freshmen and 43 transfer students.

Student Visa Categories Fall 2004

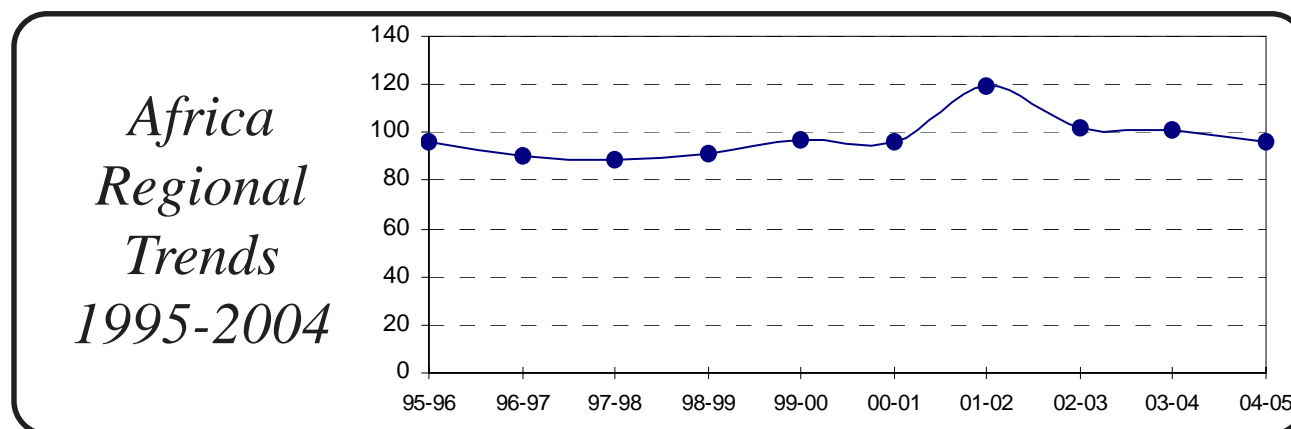
	F1 Visa	J1 Visa	Other
Undergraduate	918	15	49
Graduate	1730	201	6
Professional	179	9	2
Total	2827	225	57

Geographic Distribution

Africa

Student Enrollment Fall 2004

Country	Total	UG	Grad	Pro	Male	Female
Botswana	2	0	2	0	1	1
Burkina-Fasso	1	0	1	0	1	0
Cameroon	1	0	1	0	1	0
Djibouti	1	0	1	0	1	0
Egypt	4	0	4	0	3	1
Eritrea	2	0	2	0	2	0
Ethiopia	3	0	3	0	3	0
Gambia	2	0	2	0	0	2
Ghana	19	4	14	1	10	9
Kenya	15	0	15	0	9	6
Madagascar	3	1	2	0	1	2
Malawi	1	0	1	0	0	1
Mali	3	0	3	0	1	2
Mauritius	2	1	1	0	1	1
Morocco	3	0	1	2	0	3
Mozambique	2	0	2	0	1	1
Niger	2	1	1	0	2	0
Nigeria	8	4	4	0	6	2
Rwanda	1	0	1	0	1	0
Senegal	2	1	1	0	1	1
SouthAfrica	5	1	4	0	2	3
Tanzania	1	0	1	0	0	1
Uganda	2	0	2	0	0	2
Zambia	2	0	2	0	0	2
Zimbabwe	9	1	8	0	4	5
GrandTotal	96	14	79	3	51	45

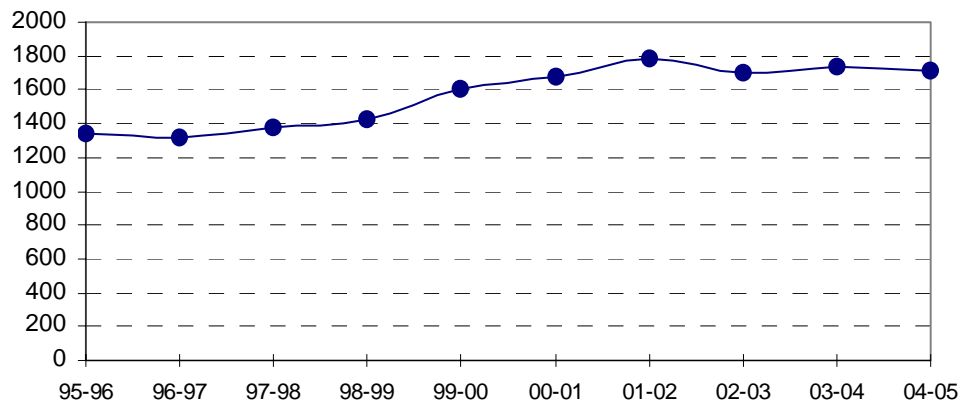


Asia

Student Enrollment Fall 2004

Country	Total	UG	Grad	Pro	Male	Female
Afghanistan	1	0	1	0	1	0
Bangladesh	12	2	10	0	10	2
Bhutan	5	0	5	0	4	1
Cambodia	2	1	1	0	2	0
China,P.R.	397	40	336	21	187	210
Hong Kong	59	43	12	4	30	29
India	333	46	260	27	228	105
Indonesia	24	10	14	0	16	8
Japan	129	34	78	17	73	56
Kazakhstan	2	0	1	1	2	0
Macau	1	1	0	0	0	1
Malaysia	55	39	14	2	31	24
Nepal	5	0	5	0	5	0
Pakistan	11	5	5	1	9	2
Philippines	19	4	14	1	5	14
Singapore	121	87	31	3	90	31
South Korea	346	155	173	18	178	168
Sri Lanka	8	2	6	0	3	5
Taiwan	101	16	79	6	53	48
Thailand	72	22	47	3	35	37
Uzbekistan	6	0	6	0	4	2
Vietnam	7	1	6	0	2	5
Grand Total	1,716	508	1,104	104	968	748

Asia Regional Trends 1995-2004



Europe

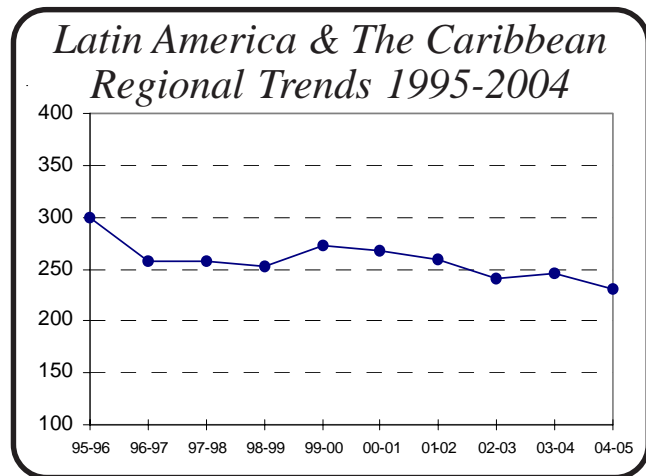
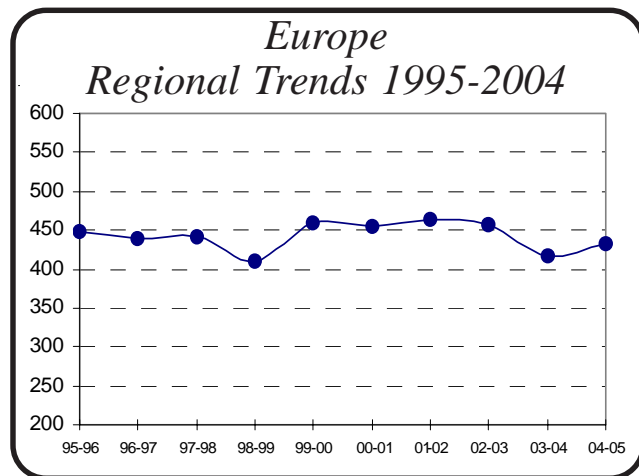
Student Enrollment Fall 2004

Country	Total	UG	Grad	Pro	Male	Female
Albania	2	1	1	0	2	0
Armenia	4	1	3	0	3	1
Austria	4	1	1	2	2	2
Azerbaijan	1	0	1	0	0	1
Belgium	6	1	2	3	4	2
Bosnia & Herzegovina	2	0	2	0	1	1
Bulgaria	20	3	17	0	11	9
Croatia	1	0	1	0	0	1
Czech Republic	4	1	3	0	2	2
Denmark	6	1	5	0	3	3
England	50	16	30	4	32	18
Estonia	1	0	1	0	1	0
Finland	2	0	2	0	0	2
France	46	5	36	5	31	15
Georgia	1	0	0	1	1	0
Germany	53	7	43	3	37	16
Greece	20	3	17	0	11	9
Hungary	7	1	6	0	6	1
Iceland	9	0	9	0	6	3
Ireland	6	0	6	0	6	0
Italy	19	0	17	2	13	6
Latvia	5	1	4	0	3	2
Lithuania	2	0	2	0	0	2
Netherlands	12	1	10	1	7	5
Norway	10	0	9	1	7	3
Poland	4	0	4	0	3	1
Portugal	9	3	5	1	4	5
Romania	27	3	24	0	15	12
Russia	33	6	25	2	20	13
Slovakia	5	0	5	0	4	1
Spain	23	1	18	4	10	13
Sweden	11	6	5	0	7	4
Switzerland	11	3	7	1	8	3
Ukraine	11	1	8	2	6	5
Yugoslavia	5	0	4	1	3	2
Grand Total	432	66	333	33	269	163

~See page 20 for European Regional Trends 1995-2004~

Latin America & The Caribbean Student Enrollment Fall 2004

Country	Total	UG	Grad	Pro	Male	Female
Argentina	15	1	14	0	6	9
Bahamas	2	1	1	0	2	0
Barbados	1	1	0	0	1	0
Bolivia	1	1	0	0	0	1
Brazil	47	9	28	10	29	18
Cayman Islands	1	0	1	0	1	0
Chile	11	0	11	0	8	3
Colombia	18	3	14	1	14	4
Costa Rica	5	1	3	1	3	2
Dominican Republic	1	0	1	0	0	1
Ecuador	10	2	7	1	7	3
El Salvador	1	1	0	0	1	0
Grenada	1	1	0	0	0	1
Guatemala	2	2	0	0	1	1
Guyana	2	0	2	0	1	1
Haiti	1	0	0	1	0	1
Honduras	3	0	2	1	3	0
Jamaica	9	5	4	0	4	5
Mexico	58	17	35	6	41	17
Panama	4	3	1	0	2	2
Paraguay	1	1	0	0	0	1
Peru	16	2	11	3	11	5
St Lucia	1	0	1	0	0	1
Trinidad and Tobago	6	2	4	0	0	6
Uruguay	4	1	3	0	2	2
Venezuela	9	3	4	2	6	3
Grand Total	230	57	147	26	143	87



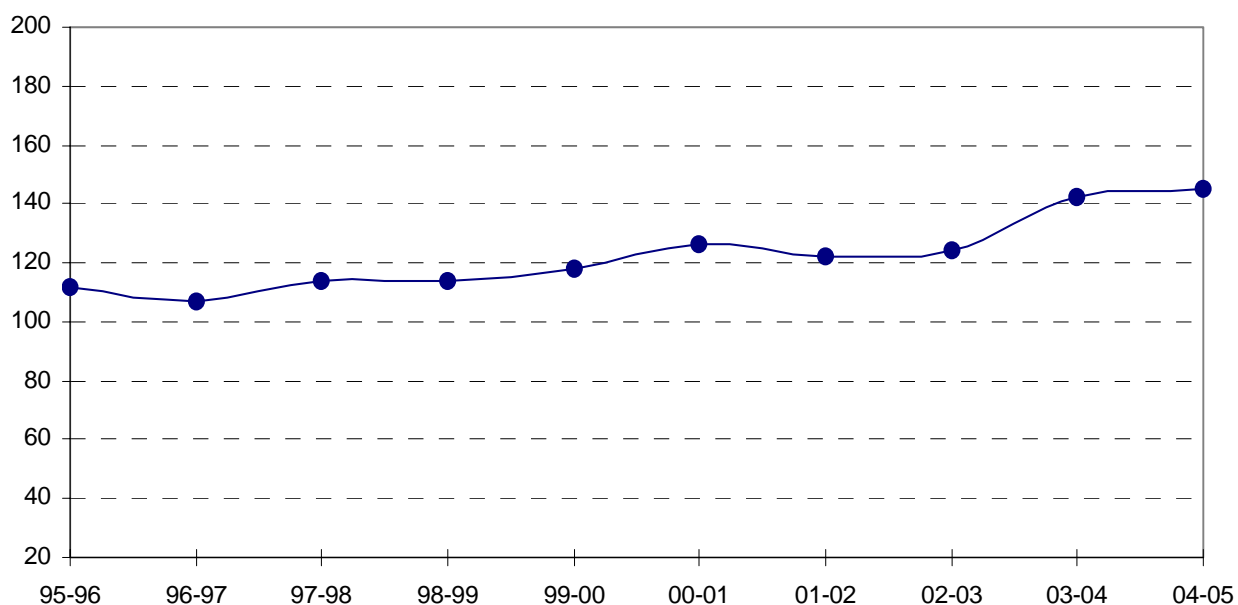
Middle East

Student Enrollment Fall 2004

Country	Total	UG	Grad	Pro	Male	Female
Bahrain	1	1	0	0	1	0
Cyprus	3	0	2	1	1	2
Iran	8	0	8	0	4	4
Israel	28	4	23	1	20	8
Kuwait	1	1	0	0	0	1
Lebanon	12	1	11	0	8	4
Turkey	88	28	55	5	55	33
United Arab Emirates	3	2	1	0	1	2
Yemen	1	0	1	0	1	0
Grand Total	145	37	101	7	91	54

Middle East

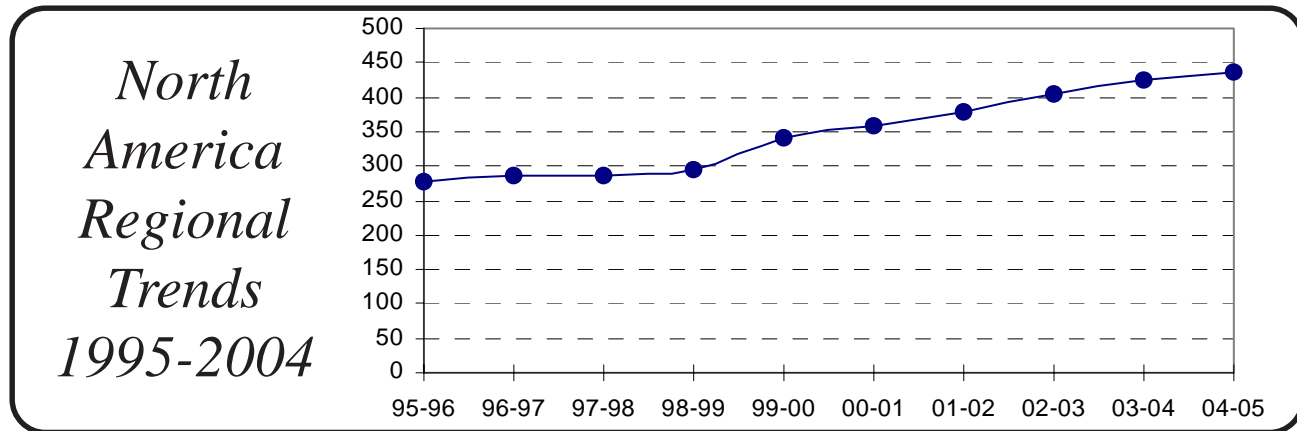
Regional Trends 1995-2004



North America

International Student Enrollment Fall 2004

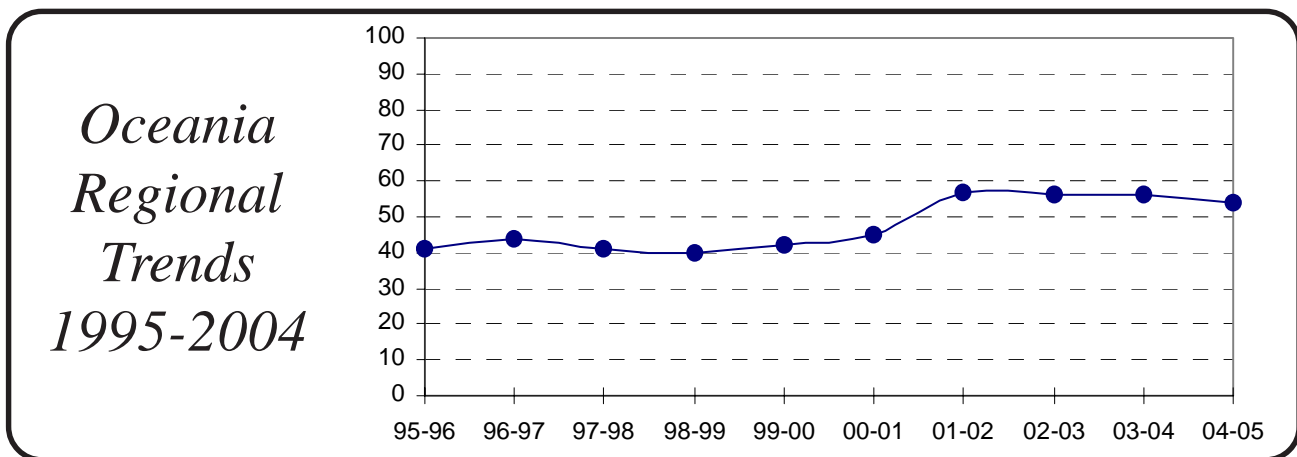
Country	Total	UG	Grad	Pro	Male	Female
Canada	436	276	146	14	265	171
Grand Total	436	276	146	14	265	171



Oceania

Student Enrollment Fall 2004

Country	Total	UG	Grad	Pro	Male	Female
Australia	36	16	17	3	25	11
New Zealand	17	8	9	0	10	7
Tonga	1	0	1	0	0	1
Grand Total	54	24	27	3	35	19



Largest Geographic Representation At Cornell University Fall 2004

Of the **122 foreign countries** represented at Cornell, the ten countries with largest representation are listed below:

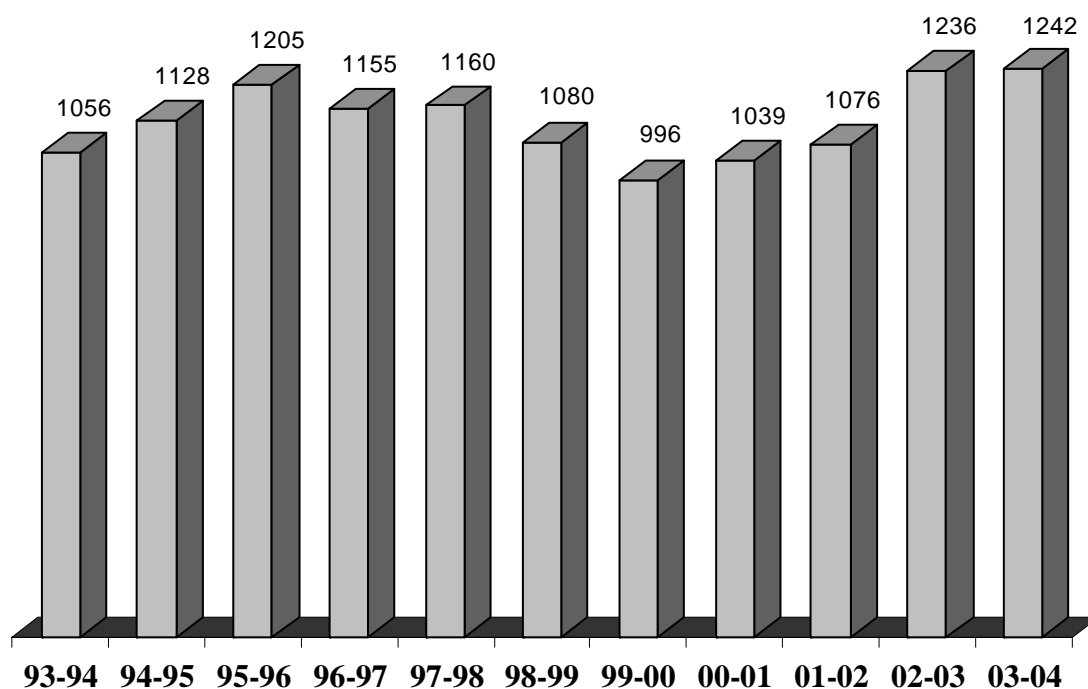
Canada	436	Singapore	121
P. R. China	397	Taiwan	101
South Korea	346	Turkey	88
India	333	Thailand	72
Japan	129	Hong Kong	59

Together, the 2082 students from these 10 countries account for 67.0% of the total international student population at Cornell, and 10.7% of Cornell's total enrollment.

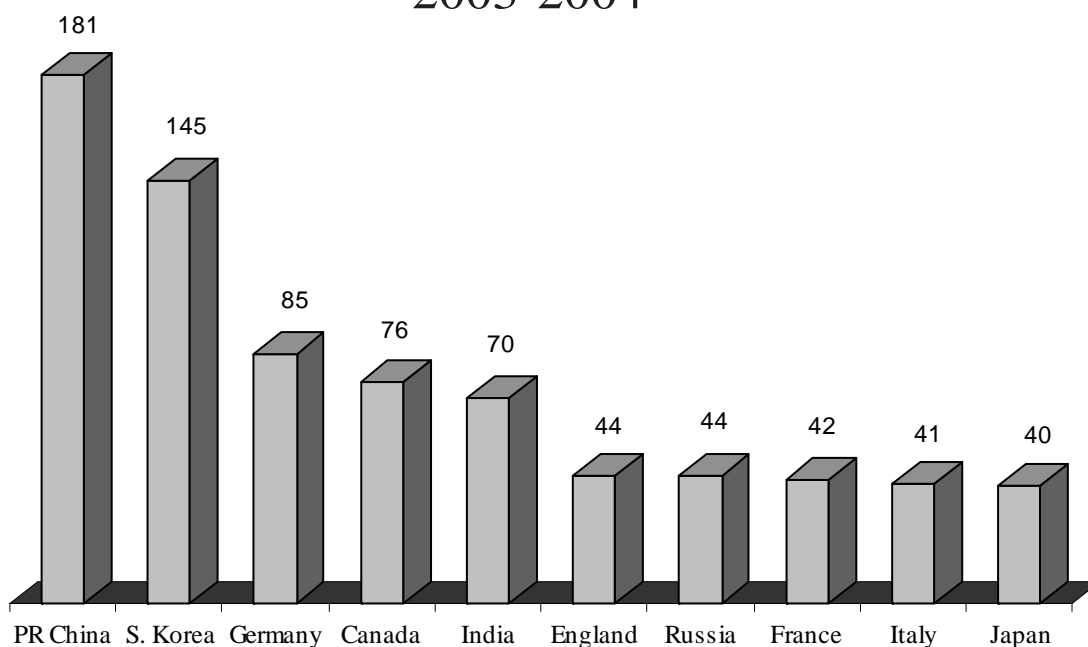
The logo for International Scholars features a solid black square on the left. The word "International" is written in white serif font across the top of the square, and the word "Scholars" is written in white serif font across the bottom of the square.

International Scholars

International Academic Staff At Cornell 1993-2004 (*Ithaca Campus*)



Largest Geographic Representation of International Academic Staff at Cornell (By Country) 2003-2004



Figures represent the total number of international academic staff members from each country employed at Cornell.

International Academic Staff at Cornell by Major Field of Specialization Fall 2004

Agriculture	98
(e.g., Agribusiness & Mgmt., Horticulture, Animal, Food, Soil Sciences, Forestry, etc.)	
Architecture & Environmental Design	13
(e.g., Architecture, Regional Planning, Interior Design, Landscape Architecture, etc.)	
Area & Ethnic Studies	49
(e.g., African Studies, Asian Studies, Latin American Studies, Afro-American Studies, etc.)	
Business and Management	38
(e.g., Acctg., Banking/Finance, Human Resource Developmt., Institutional Mgmt., Labor/Industrial Relations, etc.)	
Communications	3
(e.g., Journalism, Public Relations, Radio/TV, Telecommunications, etc.)	
Computer & Information Sciences	41
Education	3
Engineering	153
(e.g., Chemical Eng., Civil Eng., Industrial Eng., Ocean Eng., etc.)	
Health Sciences	42
(e.g., Dentistry, Medicine, Nursing, Pharmacy, Public Health, Veterinary Med., etc.)	
Home Economics	18
(e.g., Food Science, Family & Community Services, Individual Development, Textiles, etc.)	
Law and Legal Studies	8
Letters	26
(e.g., English, Classics, Comparative Literature, Creative Writing, Linguistics, etc.)	
Library Science	8
Life Sciences/Biological Sciences	348
(e.g., Biology, Biochemistry, Botany, Zoology, etc.)	
Mathematics	24
Philosophy and Religion	1
Physical Sciences	250
(e.g., Astronomy, Chemistry, Geology, Physics, etc.)	
Psychology	3
Public Affairs	16
Social Sciences and History	34
(e.g., Anthropology, Demography, Economics, History, International Relations, Political Science, Sociology, etc.)	
Visual & Performing Arts	4
(e.g., Dance, Dramatic Arts, Film Arts, Fine Arts, Music, etc.)	
Other	62
Total	1242

International Academic Staff at Cornell by Geographic Region Fall 2004

<u>Africa</u>	<u>Europe</u>	<u>Latin America and The Caribbean</u>
BENIN 1	Albania 1	Argentina 7
CAMEROON 1	Armenia 3	Barbados 1
EGYPT 3	Austria 3	Brazil 12
ETHIOPIA 3	Belgium 8	Chile 4
GABON 1	Bosnia & Herzegovina 2	Colombia 9
KENYA 5	Bulgaria 8	Honduras 1
MAURITANIA 1	Croatia 2	Jamaica 2
MOROCCO 1	Czech Republic 1	Mexico 10
NIGERIA 2	Denmark 11	Peru 3
SOUTH AFRICA 3	England 44	Uruguay 4
TOGO 1	Estonia 1	Venezuela 5
ZIMBABWE 1	Finland 6	Total 58
TOTAL 23	France 42	
	Georgia 2	
	Germany 85	
	Greece 9	
	Hungary 6	
	Iceland 1	
	Ireland 4	
	Italy 41	
	Moldova 2	
	Netherlands 25	
	Norway 9	
	Poland 12	
	Portugal 5	
	Romania 8	
	Russia 44	
	Scotland 1	
	Slovakia 4	
	Spain 37	
	Sweden 14	
	Switzerland 14	
	Ukraine 5	
	Total 460	
		<u>Middle East</u>
		Iran 4
		Israel 24
		Jordan 1
		Lebanon 1
		Saudi Arabia 1
		Syria 1
		Turkey 21
		Total 53
		<u>North America</u>
		Canada 76
		Total 76
		<u>Oceania</u>
		Australia 21
		New Zealand 3
		Total 24
<u>Asia</u>		
BANGLADESH 1		
CAMBODIA 1		
CHINA, P. R. 181		
HONG KONG 2		
INDIA 70		
INDONESIA 2		
JAPAN 40		
KYRGYZSTAN 1		
MALAYSIA 1		
MONGOLIA 2		
NEPAL 2		
PAKISTAN 6		
PHILIPPINES 5		
SINGAPORE 5		
SOUTH KOREA 145		
SRI LANKA 5		
TAIWAN 8		
THAILAND 11		
VIETNAM 4		
TOTAL 492		

Ivy

plus

Participating Institutions

Brown University

Columbia University

Cornell University

Dartmouth College

Harvard University

Massachusetts Institute of Technology

Princeton University

Stanford University

University of Chicago

University of Pennsylvania

Yale University

Note: Ivy Plus reports as of March 2005

figures compiled and presented by
Cornell University
International Students and Scholars Office
Ithaca, New York
March 2005

Ivy Plus
International Student Enrollment
Fall 2004

Graduate and Professional Enrollment

	<u>Brown</u>	<u>Columbia</u>	<u>Cornell</u>	<u>Dartmouth</u>	<u>Harvard</u>	<u>MIT</u>	<u>Princeton</u>	<u>Stanford</u>	<u>U. Chicago</u>	<u>U. Penn</u>	<u>Yale</u>
All Graduate & Prof	1,945	14,894	5,893	1,625	13,169	6,622	2,030	8,093	9,000	11,216	6,117
Int'l Grad & Prof	567	3,203	2,127	441	3,001	2,375	895	2,662	1,676	2,154	1,313
% International	29.2%	21.5%	36.1%	27.1%	22.8%	35.9%	44.1%	32.9%	18.6%	19.2%	21.5%

Undergraduate Enrollment

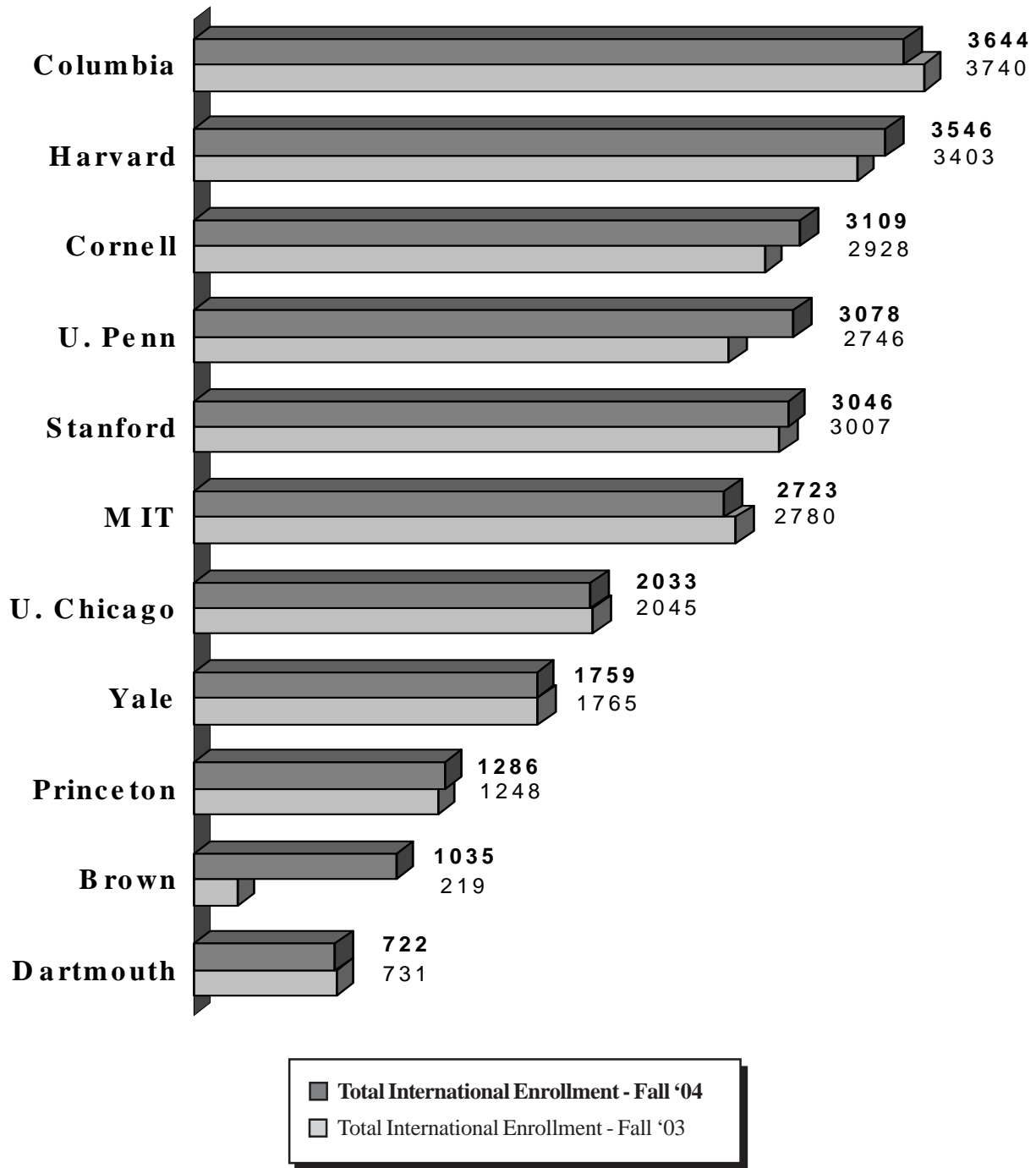
	<u>Brown</u>	<u>Columbia</u>	<u>Cornell</u>	<u>Dartmouth</u>	<u>Harvard</u>	<u>MIT</u>	<u>Princeton</u>	<u>Stanford</u>	<u>U. Chicago</u>	<u>U. Penn</u>	<u>Yale</u>
All Undergraduates	5,867	6,790	13,625	4,079	6,562	4,437	4,678	6,753	4,400	10,222	5,242
Int'l Undergraduates	468	441	982	281	545	348	391	384	357	924	446
% Int'l Undergrads	8.0%	6.5%	7.2%	6.9%	8.3%	7.8%	8.4%	5.7%	8.1%	9.0%	8.5%

Total Student Enrollment (excluding non-degree students)

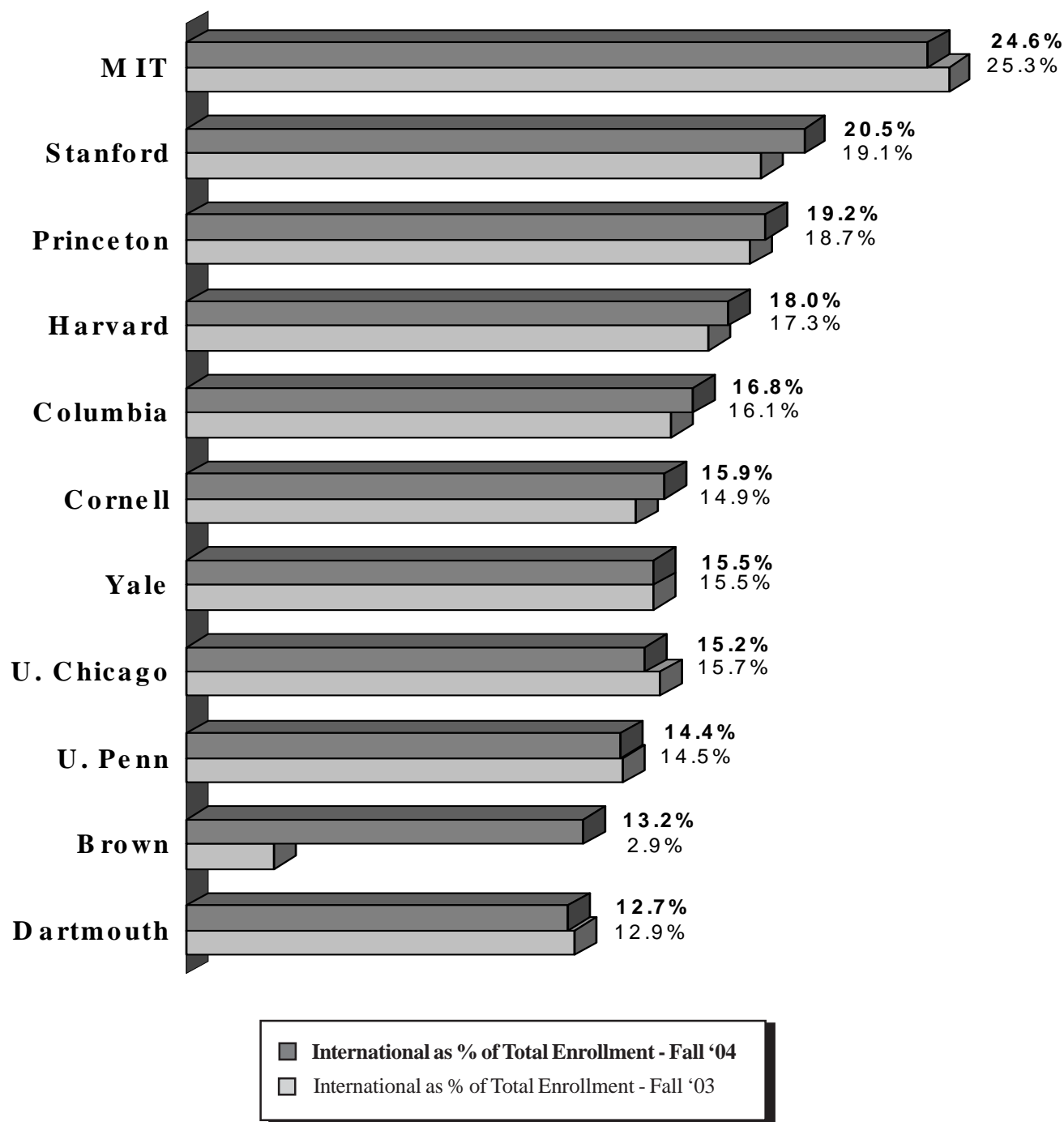
	<u>Brown</u>	<u>Columbia</u>	<u>Cornell</u>	<u>Dartmouth</u>	<u>Harvard</u>	<u>MIT</u>	<u>Princeton</u>	<u>Stanford</u>	<u>U. Chicago</u>	<u>U. Penn</u>	<u>Yale</u>
Total Enrollment	7,812	21,684	19,518	5,704	9,731	11,059	6,708	14,846	13,400	21,438	11,359
Total International	1035	3,644	3,109	722	3,546	2,723	1,286	3,046	2,033	3,078	1,759
% International	13.2%	16.8%	15.9%	12.7%	18.0%	24.6%	19.2%	20.5%	15.2%	14.4%	15.5%

of Countries Represented **98** **128** **122** **80** **125** **111** **93** **109** **93** **120** **108**

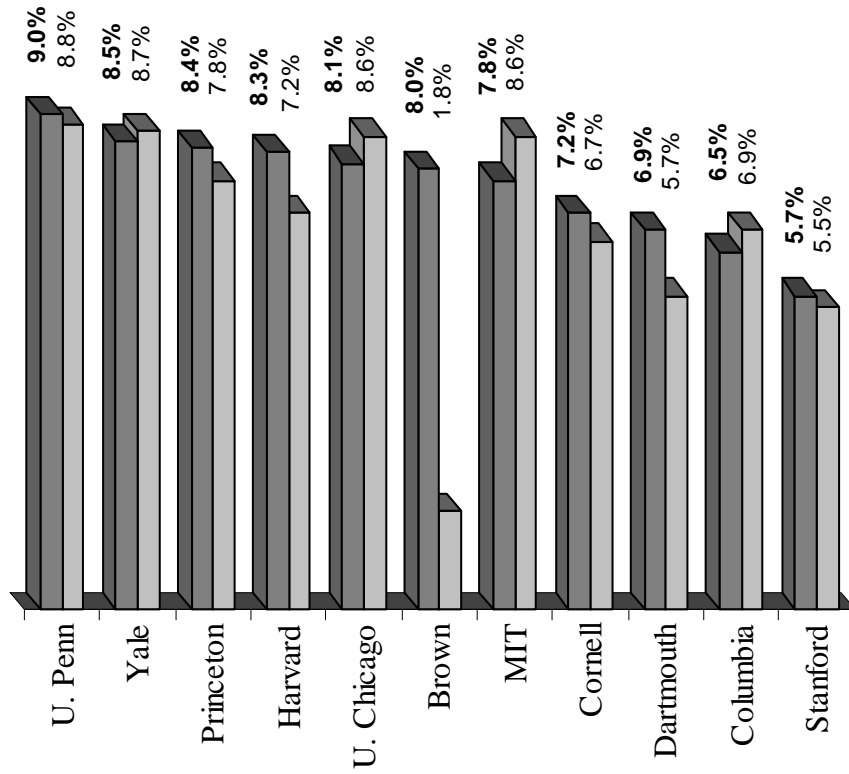
Total International Student Enrollment Fall 2004 & Fall 2003 ~ *a comparison*



International Students as Percentage of All Students Fall 2004 & Fall 2003 ~ *a comparison*

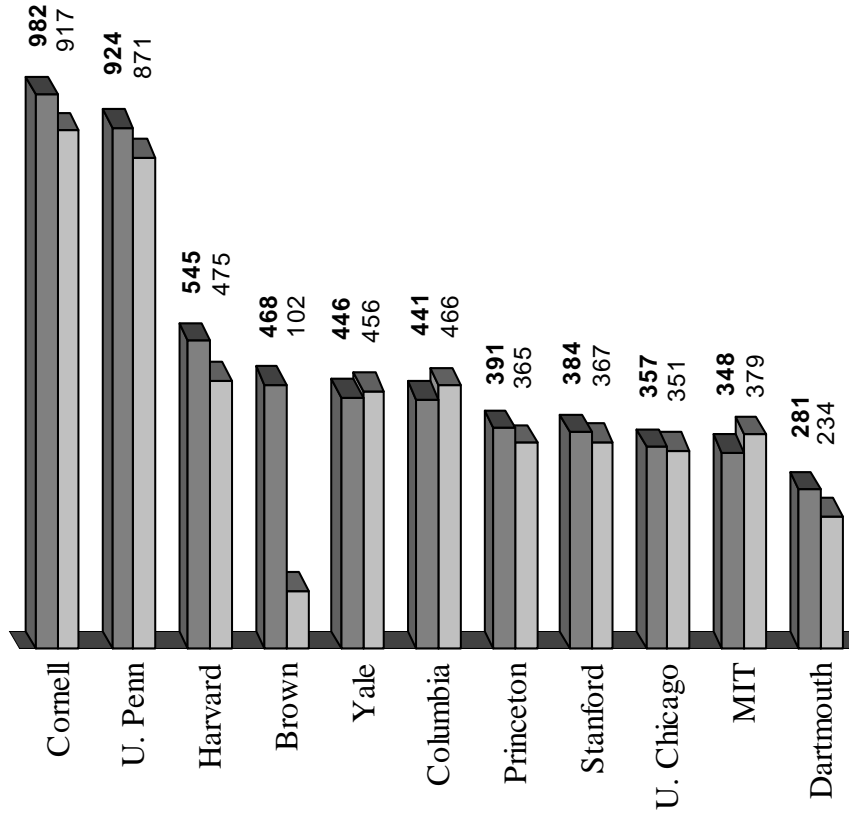


International Undergraduates as a Percentage of All Undergraduates Fall 2004 & Fall 2003 ~ a comparison



■ International Undergrads as % of Total Enrollment - Fall '04
 □ International Undergrads as % of Total Enrollment - Fall '03

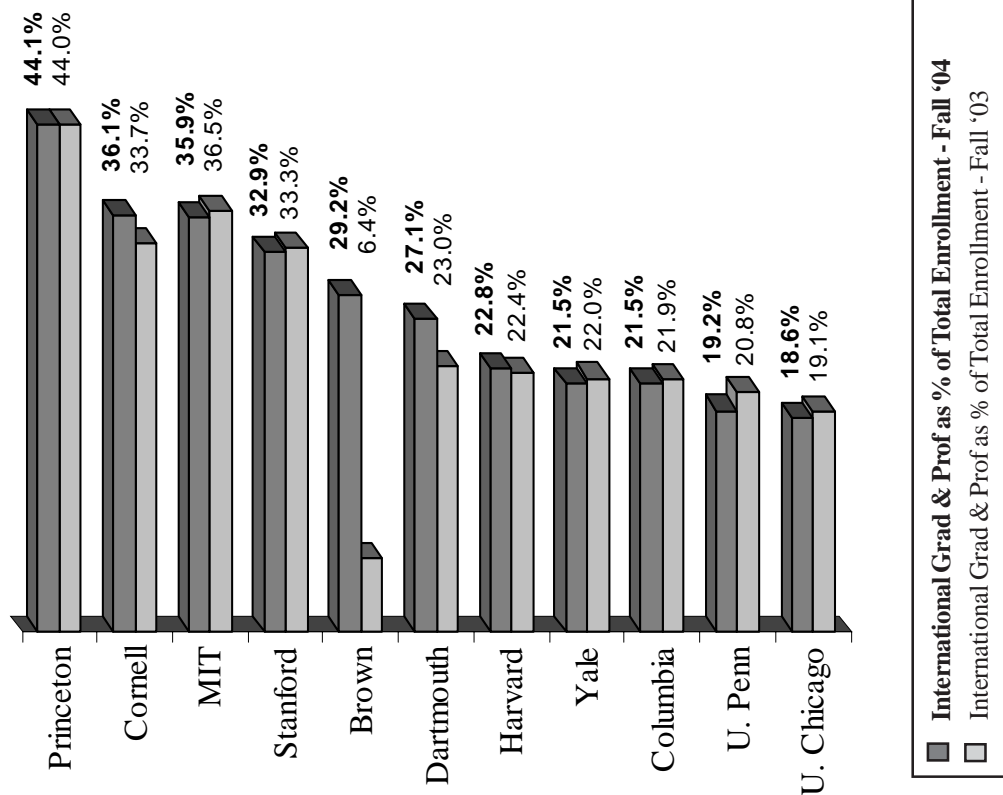
International Undergraduate Enrollment Fall 2004 & Fall 2003 ~ a comparison



■ International Undergraduate Enrollment - Fall '04
 □ International Undergraduate Enrollment - Fall '03

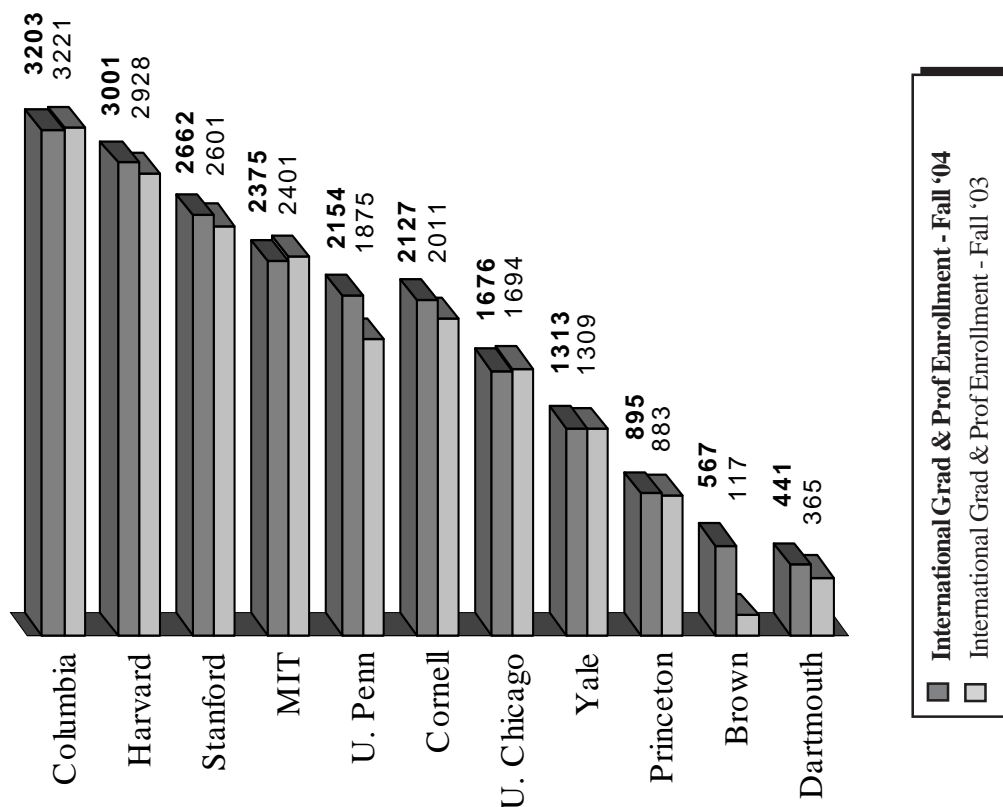
Ivy Plus

International Grad & Professionals as a % of All Grad & Professionals Fall 2004 & Fall 2003 ~ a comparison



Ivy Plus

International Student Enrollment Professional Student Enrollment Fall 2004 & Fall 2003 ~ a comparison



Ivy Plus
International Scholars 2003-2004

Visa Types		<u>Brown</u>	<u>Columbia</u>	<u>Cornell</u>	<u>Dartmouth</u>	<u>Harvard</u>	<u>MIT</u>	<u>Princeton</u>	<u>Stanford</u>	<u>U. Chicago</u>	<u>U. Penn</u>	<u>Yale</u>
J-1		273	978	713	114	2,006	813	415	1,538	600	684	1,031
H-1		96	784	302	113	838	411	224	530	306	1,020	647
O-1		2	70	8	4	50	18	9	0	*	16	39
Other Visa Types		*	84	219	47	135	325	78	11	*	7	53
Total		371	1,916	1,242	278	3,029	1,567	726	2,079	906	1727	1,770

PR Petitions Filed/Employment Preferences		<u>Brown</u>	<u>Columbia</u>	<u>Cornell</u>	<u>Dartmouth</u> ¹	<u>Harvard</u>	<u>MIT</u>	<u>Princeton</u>	<u>Stanford</u>	<u>U. Chicago</u>	<u>U. Penn</u>	<u>Yale</u>
EB1	Priority Workers	*	24	18	*	9	10	14	5	*	21	22
EB2	Advanced Degree	*	2	12	*	5	5	0	13	*	26	17
EB3	Skilled Workers	*	3	*	*	0	1	0	*	*	12	1
Other Preferences		*	*	*	*	*	0	*	*	*	4	0
Total		*	29	30	~20	14	16	14	18	*	63	40

^{*}Figures not reported, not available, or not applicable.
¹Dartmouth does not file PR cases. The approximately 20 individuals approved for college PR sponsorship were referred to an attorney for filing.

Ivy *Plus*
International Scholars
2002-04 ~ a comparison
(excluding Permanent Residents)

